

This manual is for reference and historical purposes, all rights reserved.
This creation is copyright© by M. Butkus, NJ, U.S.A.
These creations may not be sold or distributed without the expressed permission of the producer
I have no connection with any camera company

On-line camera manual library

If you find this manual useful, how about a donation of \$2 to:
M. Butkus, 29 Lake Ave., High Bridge, NJ 08829-1701
and send your e-mail address so I can thank you.
Most other places would charge you \$7.50 for a electronic copy or
\$18.00 for a hard to read Xerox copy.

This will allow me to continue this site, buy new manuals and pay their shipping costs.

It'll make you feel better, won't it?

If you use Pay Pal, go to my web site

www.orphancameras.com and choose the secure PayPal donation icon.

**FOR BEST RESULTS FOLLOW
THESE SIMPLE RULES:**

1. Never use force if parts seem to jam. Proceed carefully and find cause for obstruction.
2. Have camera in shade when loading. See that shutter is closed first.
3. Attach paper leader of new film to empty spool firmly and evenly. Fasten back of camera securely.
4. Wind film immediately after taking each picture.
5. Do not let the sun shine on lens.
6. Never make a time exposure while holding the camera in the hands.
7. Hold the camera level.
8. Hold the camera steady when taking a picture. The slightest movement will cause a blur.
9. Don't try to get too much in one picture. Have subject located in finder. Be careful that finder does not cut off portions of head and body of subjects.
10. Have film developed soon after it is exposed.
11. Smile—and your subject will smile with you.
12. Your camera costs money. Take care of it.
13. Wherever you go, take your camera along. And remember that there are wonderful pictures to be had at all times around the home. The snapshot of today is the treasure of tomorrow.
14. Use Agfa Plenachrome Film for best results. The size to fit this camera is B2.

BETTER PICTURES

with the

AGFA ANSCO B2

Cadet

BOX CAMERA

INSTRUCTIONS FOR THE USE OF AGFA ANSCO B2 CADET CAMERA

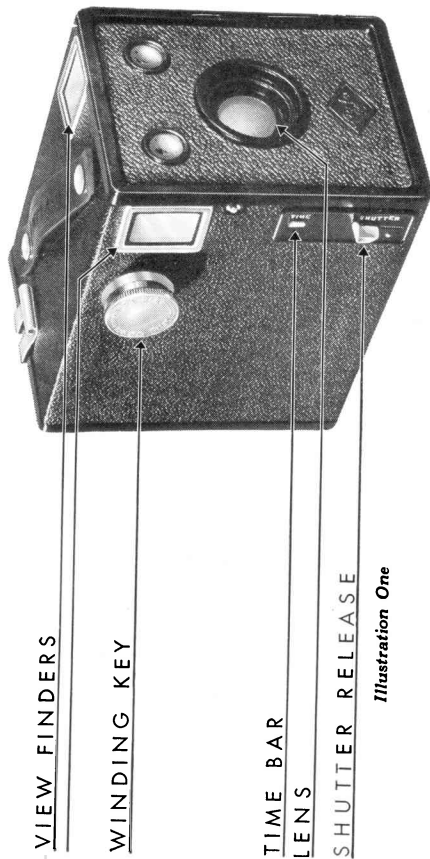


Illustration One

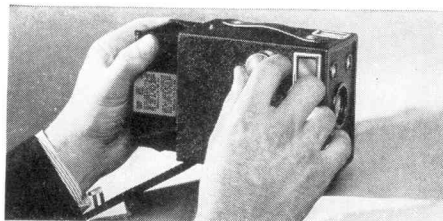


Illustration Two

LOADING THE CAMERA

The Cadet Camera requires no special precautions for loading except that direct sunlight should always be avoided when placing film in the camera or removing it after exposure. If it is not convenient to load the camera in the house, step under the shade of a veranda or of a tree, or turn so as to shade the operation with your own body. First, open the back by lifting the catch on top near the handle. Now, holding the camera as shown in Illustration Two, remove the cone by pulling out the winding knob so that it disengages from the slot in the end of film spool inside. As you take out the cone, note its position, so that when it is returned to the camera with a new film, the winding knob will engage with the slot of the empty spool.

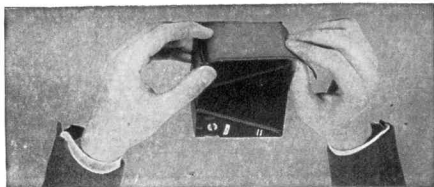


Illustration Three

HOW TO INSERT THE FILM

Agfa Plenachrome Film—B2 size—is especially recommended for best results. However, any reputable make of film may be used in the camera. Agfa Plenachrome, because of its speed, will give you clear pictures even under adverse light conditions. Its exceptional latitude enables you to take pictures early in the day, in the strong light of midday, or in late afternoon. Finally, Plenachrome is a highly color-sensitive film, which means greater delicacy in the rendering of flesh tones and in all the colors of nature. Insert a fresh roll of film, being careful to place it so that the paper will roll with the red side out. Draw paper across back of cone as in Illustration Three, and thread paper into slot in empty spool. See that the spool has the slotted end towards the hole in cone which receives winding knob. With winding knob pulled out so that it will not interfere,

replace cone in camera as shown in Illustration Four. With cone inserted, depress knob and turn gently to the right until it slips into slot in end of empty spool. Close and clasp back of camera and continue winding until figure 1 appears in the red window.

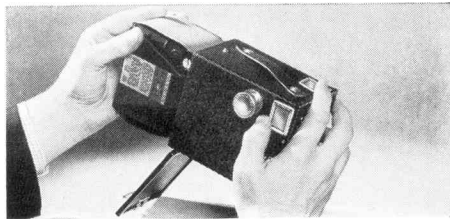


Illustration Four

TAKING SNAPSHOTS

Hold camera firmly with lens pointed toward subject, which should not be closer to the camera than eight feet. Make sure that the time bar is pressed in. Locate subject in the view finder and then take the snapshot by pushing the trigger down. To avoid pictures blurred by jarring the camera, keep it close to your body and hold your breath until the shutter clicks.

After the first picture has been taken, turn the winding knob until the figure 2 appears in the red window. In the same manner, move

the film to the next number directly after each picture has been taken.

TIME EXPOSURES

When the light is very dull, or when it is desired to take pictures indoors, time exposures will be necessary. Proceed as follows: First, put your camera on a firm support such as a table or chair to prevent movement. Next, pull out the time bar. See Illustration One.

Press the shutter release in the same manner as used when making snapshots. The length of the exposure depends upon how long the shutter release lever is held down, since the shutter remains open as long as the lever is held down and closes when the lever is released.

For outdoor pictures, time exposures of more than one second, even when taking pictures in the woods, are seldom required if you use Agfa Plenachrome Film. Expose longer on indoor scenes. The subject should remain still throughout the exposure, and the camera should be motionless, on a rigid support. Do not hesitate to make time exposures, which produce beautiful negatives when light conditions are too poor for snapshots. Excellent interiors of your home can be made with Agfa Plenachrome Film and this camera.

REMOVING THE FILM

When the last picture has been taken, com-

plete winding of the film onto the knob spool before opening back of camera. The exposed roll can now be removed and its end fastened with the sticker which you will find at the end of each roll of Agfa Film. Before inserting cone and closing camera again, transfer the empty spool to the other chamber so that it will be ready for a new roll of film.

AGFA ANSCO PORTRAIT ATTACHMENT

All box cameras are designed to give clear, sharp pictures of a subject eight or more feet away. When closer, use a portrait attachment. For this B2 Cadet Camera use the Agfa Ansco Portrait Attachment No. 22, with which you can make head and shoulder portraits, close-ups of flowers, etc. Place attachment in front of lens opening and locate subject in finder. The subject must be between $3\frac{1}{2}$ and 4 feet from the lens; measure the distance carefully from lens to subject. The same exposure is required as without the attachment. If you are unable to buy a No. 22 Agfa Ansco Portrait Attachment from your dealer, write direct to Agfa Ansco, Binghamton, N. Y., enclosing \$.90 in stamps, check, or money order, together with your dealer's name and address.